

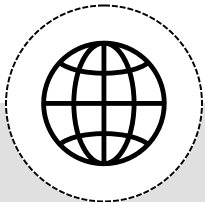


OPEN AI ASSISTED MAPPING THAT PUTS CONTROL IN THE HANDS OF USERS

f: for freedom and free and open-source software

AI: for Artificial Intelligence

r: for resilience and our responsibility for our communities and the role we play within humanitarian mapping



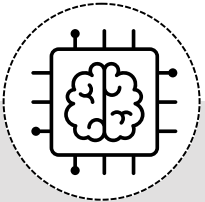
Openness

Fully free and open source.



Localization

Sensitive to the local nature of each area.



Humans + AI

Sensitive to the local nature of each area.



AI Literacy

fAIR's process is open and transparent

The combination of Artificial Intelligence (AI) and machine learning (ML) is advancing mapping and spatial analysis. **Spatial data creation, which has always been a manual and time consuming process, now has the potential to become partially or fully automated.**

The first of its kind, fAIr is completely Open Source and created with community needs in mind. **f(AI)r puts control of the AI models and training directly at the hands of the mappers** that use them. Utilizing OpenStreetMap's open and editable platform, fAIR crowdsources the training of the model, allowing for progressively faster and more accurate mapping.

Local Model



Crowdsourced model feedback



Open data is published in OSM

OSM mapper activity informs model, improving data accuracy as project progresses leading to improved data quality and faster mapping.